



Removal

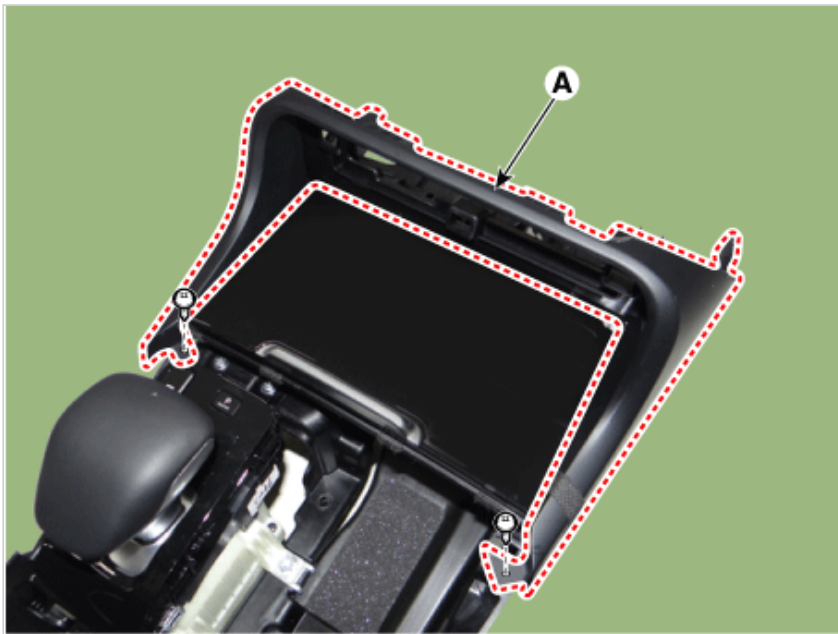
⚠ CAUTION

- Handling wireless charging system parts by wet hands may cause electric shock.
- Put on gloves to protect your hands.

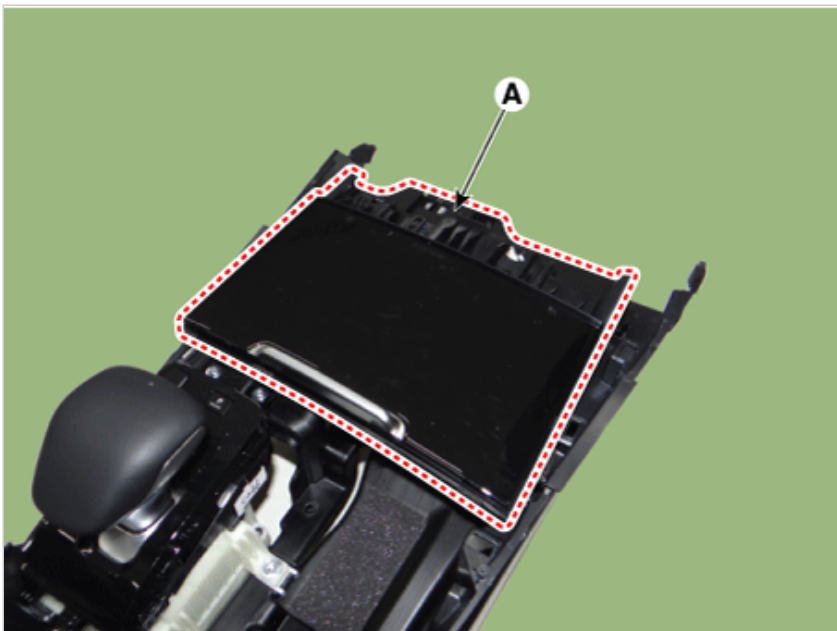
NOTICE

- When prying with a flat-tip screwdriver or use a prying trim tool, wrap it with protective tape, and apply protective tape around the related parts, to prevent damage.
- Use a plastic panel removal tool to remove interior trim pieces to protect from marring the surface.
- Take care not to bend or scratch the trim and panels.

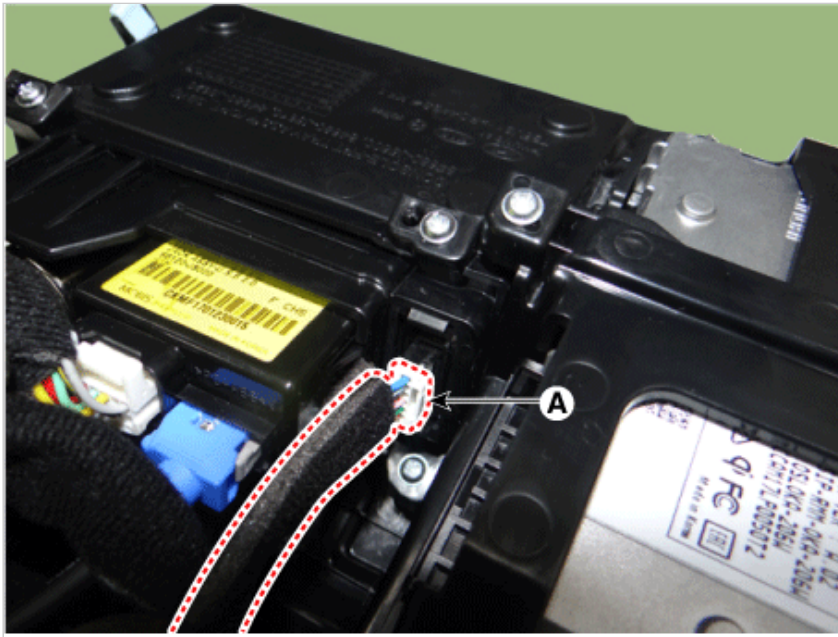
1. Disconnect the negative (-) battery terminal.
2. Remove the console complete assembly.
(Refer to Body - "Floor Console Assembly")
3. Remove the front cover (A) after loosening the mounting screws.



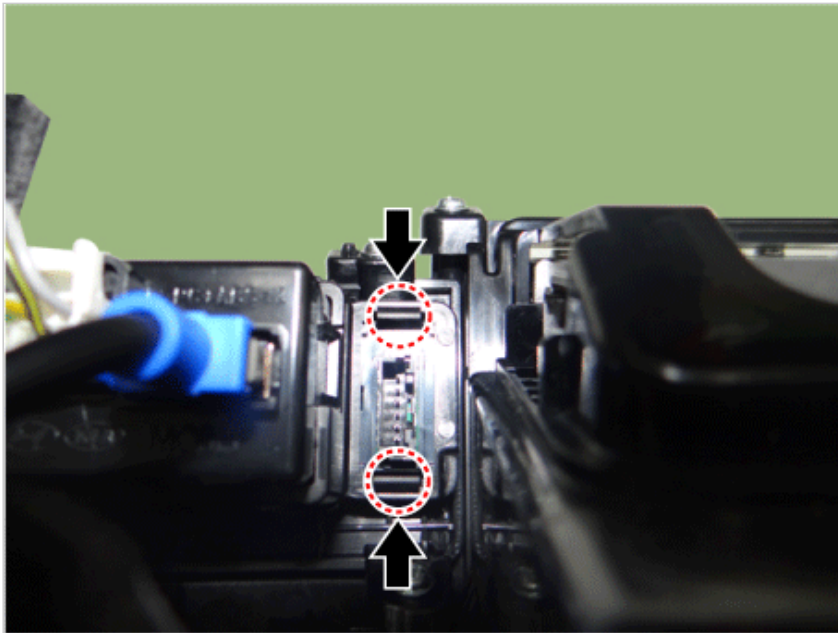
4. Remove the floor console tray (A) by using a remover.

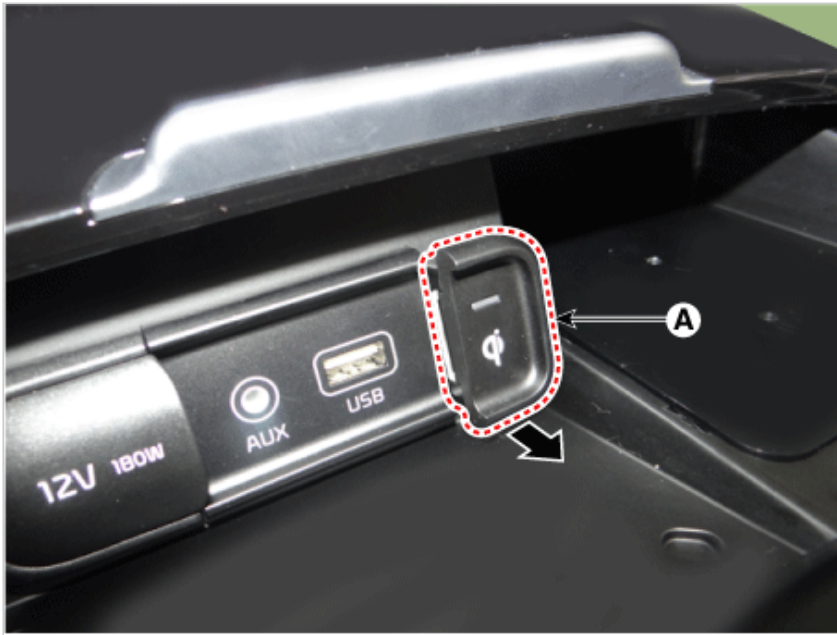


5. Disconnect the wireless power charging lamp connector (A).



6. Remove the wireless power charging lamp (A) by pressing the fixing hooks.





Installation

1. Install the wireless power charging lamp.
2. Connect the wireless power charging lamp connector.
3. Install the floor console tray.
4. Install the front cover.
5. Install the console complete assembly.
6. Connect the negative (-) battery terminal.